

21/136 Series - Transfer Relays

DPDT, 30 Amps

NEMA TS2 Approved

The 21 and 136 series flash transfer relays have a proven industry record of reliability. Their rugged design has allowed the products to be plugged in and left, for years of service.

GENERAL SPECIFICATIONS (@ 25° C)

Contacts:	21 Series	136 Series
Contact Configuration	DPDT	DPDT
Contact Material	Silver Alloy	Silver Alloy
Contact Rating		
120 / 240VAC Resistive	30 Amp	30 Amp
28VDC Resistive	20 Amp	20 Amp
Motor 120VAC 1 Phase	1 1/2Hp	1/4Hp
Motor 240VAC 3 Phase	2Hp	-
120VAC Tungsten	20 Amp	20 Amp
Contact Resistance, Initial	100 milliohms max @ 6VDC	100 milliohms max @ 6VDC
Coil:		
Coils Available	AC and DC	AC
Nominal Coil Power	2.4VA	6VA
Input Voltage Tolerance - AC	75% to 110% of nominal	85% to 110% of nominal
Input Voltage Tolerance - DC	70% to 110% of nominal	75% to 110% of nominal
Drop-out voltage	10% of nominal	10% of nominal
Duty	Continuous	Continuous
Timing:		
Operate Time (max)	20 mS	20 mS
Release Time (max)	20 mS	20 mS
Dielectric Strength:		
Across Open Contacts	600Vrms	600Vrms
Between mutually insulated point	1500Vrms	1500Vrms
Insulation resistance	1,000 Mohms min @ 500VDC	1,000 Mohms min @ 500VDC
Temperature:		
Operating	-34 to 74°C (-30 to 165°F)	-34 to 74°C (-30 to 165°F)
Storage	-40 to 105°C (-40 to 221°F)	-40 to 105°C (-40 to 221°F)
Life Expectancy:		
Electrical (full load)	200,000	100,000
Mechanical (no load)	5,000,000	5,000,000
Miscellaneous:		
Mounting Position	Any	Any
Enclosure	Clear Polycarbonate	Clear Polycarbonate
Weight	7.2oz (205 grams)	8.1oz (230 grams)
Mating Socket	SK-TRF8-BFW-1	SK-TRF8-BFW-1

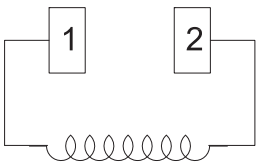
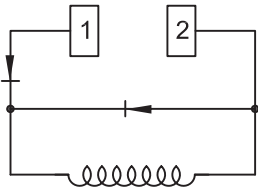
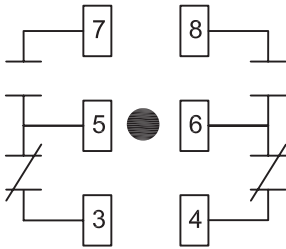


The 21 series coil is rectified which provides chatter free operation in brownout conditions down to 85VAC and will not overheat up to 130VAC. Rectified coils also provide less power consumption and less heating.

The 136 Series is a straight AC operated coil with a copper shading ring instead of a rectified coil.

General Purpose Relays

Wire Diagram

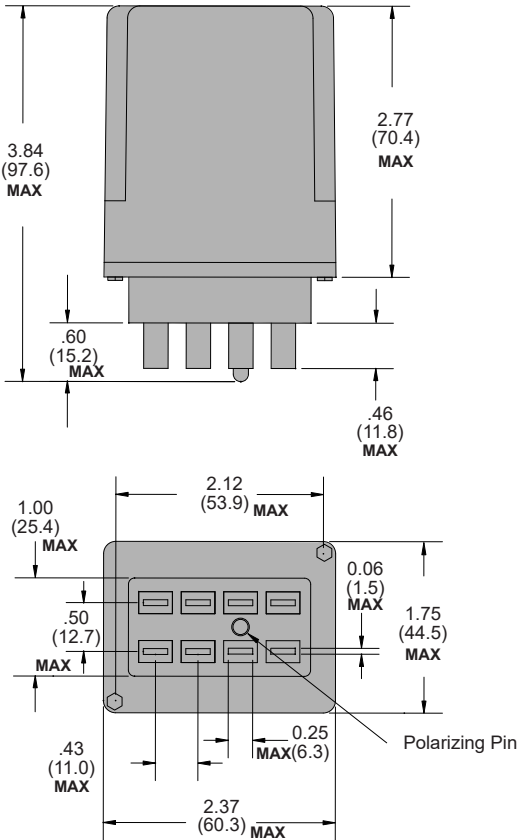


DC COIL

Newly Available

Outline Dimensions

Dimensions Shown in inches & (millimeters)



21 Legacy Part Number Chart

NEMA Approved Part numbers	Current Product Marking
W21ACPXD-5	21ACPX-2/21XBXP-120VAC
W21ACPXD-6	21ACPX-8/21XBXP-240VAC

May also order

Part numbers/Midtex Type	Voltage
136-62T3A1	120VAC

Coils Available	AC and DC
Nominal Coil Power	2.4VA
Input Voltage Tolerance AC	75% to 110% of nominal
Input Voltage Tolerance DC	70% to 110% of nominal
Drop Out Voltage	10% of nominal
Duty	Continuous

Ordering Code **21** **XBX** **P** **120VAC**

Series
21

Contact Arrangement
XBX - (2 form C - DPDT)

Optional Features
Polycarbonate cover - CODE P
Light Pipe for coil voltage indicator - CODE L
*Gold diffused, serrated contacts - CODE 33

Coil Voltage
AC: 120, 240 (Add VAC)
DC: 12, 24 (Add VDC)
Coil voltages and frequencies must be specified

*Ideal for LED lamp applications